

“MOST OF JAPANESE CRAFTSMAN DO NOT SPEAK ENGLISH””

There are craftsmen in Japan who are highly skilled and have been carrying on traditions for more than 500 years. The traditional craft market in which they are located has shrunk to one-fifth of its peak 40 years ago. Accompanying this decline, the number of craftspeople has also decreased, and there are no successors.

If this trend continues, the Japanese craft market will decline. The primary reason for this is that Japanese craftspeople do not speak English. Many craftspeople are elderly and are perilously weak in digital relations.

When we talk to craftspeople, we find that even if they receive an email in English, they refuse to respond to the inquiry because they do not understand English or the delivery method, and even if they do respond, it takes too much time to do so.

We started our business to be a bridge between customers and craftsmen so that we can create important opportunities for them. If you contact us, we will put you in touch with craftsmen all over Japan and let you know what you want. Whatever your request may be, please contact us at the e-mail address below and we will respond to you.

Mails we have received for example

I want you to construct a wall with Japanese paper,

I want you to make a Japanese sword completely custom-made,

I want to make an original product for my company.

Suigekyo LTD.

Mail: contact@suigenkyo.com



CONTENTS

- | | |
|---------------------|--------------------------|
| 1. KYO-BOW | Shibata Kanjuro Bow Shop |
| 2. KYO-TSUZURA | Watanabe-Shoten |
| 3. Japanese Lantern | Namidabashi-Oshimaya |
| 4. Mino-Washi | Warabi paper Company |
| 5. Edo-Kiriko | Tatematsu |
| 6. Kyo-Bamboo | Nagaoka-meichiku |
| 7. Kyo-Ware | Shinrokugama |
| 8. Kiyomizu-Ware | Morishunzan |
| 9. Kiyomizu-ware | Ichirakugama |
| 10.Owari-Cloisonne | kato-Cloisonne Studio |
| 11. Edo-Kiriko | Nemoto Glass Kogei |
| 12.Samurai Armor | Marutake |
| 13.Omi-Ikkanbari | Ebitani-Kogei |



Kyo-Bow Inheriting the 500 years of TRADITION



1. The Shibata Kanjuro Bow Shop, which has been in business since the Warring States Period (1467-1615), still has a bow store in Kiyomizu Gojo, Kyoto. We can be greeted by their poster dog "Gen"
2. Every single step of the process is a challenge, and a sense of tension is always in the air in the workshop.
3. The final process of shaving bow makes huge impact on the crafting done by Kanjuro Shibata, 21st generation of the store.

Shibata Kanjuro Bow Shop

【柴田勘十郎弓店】

Kyo to bow are one of Japan's representative bows and are highly trusted by archery enthusiasts. Every single step of the process is a challenge, and a sense of tension is always in the air in the workshop. From the cutting of the bamboo to the finishing process, there are six major processes involved in the creation of a Kyoto bow.

The most spectacular of these processes is the shooting. It takes only 15 minutes for the glue to set, and the bow is warped. There are no blueprints for the entire process, including shooting, and all the attention is focused on bow making, relying on the experience as all bamboos are in different conditions.

Profile

Only one Kyo-bow store in Kyoto, "Kanjuro Shibata Bow Shop" The owner has been in the business for about 40 years and is the 21st generation to preserve the name "Kanjuro". They craft Kyoto bows that take advantage of the characteristics of Kyoto's bamboo, which has distinct seasons of spring, summer, fall, and winter, in the bow's performance. In 2013, we delivered 59 Azusa Yumi bows to Ise Jingu Shrine and received in audience by his majesty the Emperor at the Imperial Palace.



YA-BYOBU

Ya-byobu is a type of interior decoration in which arrows are placed in a wooden frame with the shape of a folding screen. It can be set up unfolded like a folding screen. In the Edo period (1603-1867), it was used in the homes of warriors as a bow case, and it allowed them to take out the bow immediately when their enemy came to attack them.

Available from US\$13,000~

※Depend on wood type

Mail: contact@suigenkyo.com

UTSUBODAI

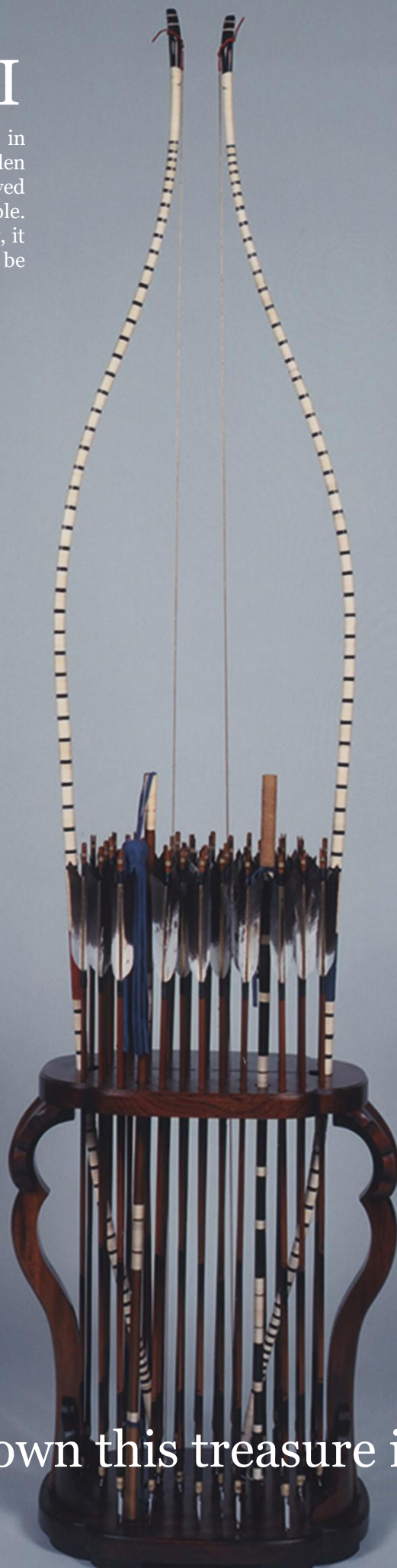
Utsubodai is a type of decorative bow in which arrows are set along a wooden frame and two bows can be displayed there. Utsubo means “strong and flexible. Although it is a type of decorative bow, it is a gem that can be used, so please be careful when you use it.

Available from US\$62,000～

※Depend on wood type

Mail:

contact@suigenkyo.com



Only 3 people own this treasure in a whole world

HAMA-YUMI

The “Hama-Yumi” is meant to drive away demons and purify the mind. In the past, it was used as a medal of honor for Prince Oda Nobunaga, who exterminated the Japanese chimera of Minamoto no Yorimasa* (chimera nue is a creature from long ago) and is the highest quality of the four classes of “bow,” “horse,” “sword,” and “spear. It is used to celebrate boys’ festivals, birthday celebrations, the New Year, new houses, etc.

Available from US\$3,200～

※Depend on wood type

Mail:

contact@suigenkyo.com



THROWING-BOW

This bow was used as a ninja's tool during the Warring States period, and as a weapon to be thrown into the palace. This bow was made based on the original model of the old days with a special mold and elegance appearance and is also used to ward off demons and pray for good health and safety in the home.

Available from US\$2,500~

※Depend on wood type



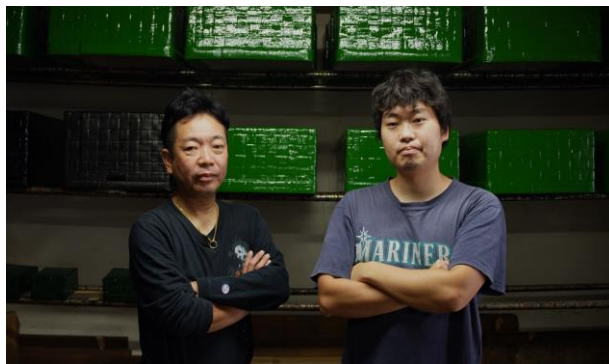
Mail: contact@suigenkyo.com

Watanabe-Shoten

【渡辺商店】

Kyo-Tsuzura (Bamboo Box) refers to Kyoto lacquered bamboo box made in Kyoto. Tsuzura is a woven basket made of woven bamboo and is known as one of a delicate craft since there are 25 detailed work processes to finish the beautiful artwork. Kyo-Tsuzura has excellent air permeability, and the lacquer and persimmon tannin applied to the surface has antibacterial, mothproof and antiseptic properties.

In the past, it was said to be the best tool for storing essential clothing. Even today, Sumo wrestlers and Kabuki actors use it as a storage space for their traditional costumes. Kyo-Tsuzura vary in shape and size because they are mostly produced for the purpose of how they can be used. Another One of another main



Profile

Watanabe Shoten is located in Higashiyama, Kyoto. There are no other Kyo-Tsuzura craftsmen in Kyoto other than Mr. Watanabe, who is responsible for making sumo wrestler's clothing box. Kyo-Tsuzura can be made to order in any size and color and can be personalized. Please see the image on the next page. If you are interested in ordering one, please feel free to contact us at the contact details below.

1. Left: Mr.Watanabe Right: Son of Mr.Watanabe. He is leaning how to craft Kyo-Tsuzura from his father.
2. The sound of bamboo peeling is very pleasant and the echoing sound in the workshop is really calming.



Kyo-Tsuzura Surviving Descendants



Watanabe Shoten **KYO-TSUZURA**

Each basket is made to order one by one. Kyo-Tsuzura is a woven bamboo basket with a lid, and Watanabe Shoten is the only craftsman in Japan that makes Tsuzura baskets. Kyo-Tsuzura baskets are coated with lacquer, which has antibacterial and anti-insect properties. It is also highly breathable, making it a perfect item for storing not only clothes and other costumes, but also other important clothes worn on a daily basis. You can also order other shapes and sizes than the ones shown in the photo. We can also put your name on it, so please feel free to contact us for more information.

Available from US\$180~ ※Depend on wood type

Mail: contact@suigenkyo.com



Hand painted lantern Inherited from the time of the SAMURAI



Namidabashi-Oshimaya

【泪橋大嶋屋提灯】

The most distinctive feature of Edo hand-painted lantern is that designs are drawn freehand. Craftsmen draw and color not only the characters but also family crests and any other complex patterns one by one by hand. The characters drawn on the lantern are generally called Edo characters, and lantern makers used to draw the manuscripts for Senja-fuda (a type of paper sign that is attached to shrines and temples as a commemoration

of a visit to the shrine or temple, on which one's name and address are written). Senja-fuda have characters within a frame, while Japanese lantern do not have a frame line. This makes the characters are a little more spontaneous. Also, unlike the way kimono crests are inserted, family crests are drawn in black on a white background. It is easy to see from a distance, and the lines are drawn in an ingenious and balanced way.

Profile

The origin of the trade Namidabashi Oshimaya date back to the Horeki era (1751-1762) of the Edo period.

Currently, the fourth generation is refining their skills with the third generation as their master. If you are interested in this craft, please feel free to contact us at the enquiries below.

1. A compass-like tool is used to position the letters and draw the lines. This technique is called "Bunmawashi".
2. The lantern with slightly rounded Edo characters and family crests on both sides. Used for celebratory occasions such as wedding, birth or opening of a new shop.

Mail: contact@suigenkyo.com



Namidabashi-Oshimaya

Hand painted lantern

Three different shapes of lanterns can be made to order. You can also design your own lettering. Some designs may be difficult to draw. If you are interested in making your original lantern, please feel free to contact us at the contact details below.

Available from US\$200～ ※Depend on custom

Mail: contact@suigenkyo.com

Warabi-paper Company

Mino handmade Washi is a Japanese paper that has been produced in Mino, Gifu Prefecture and is one of the most famous papers of Japan. Mino Washi is popular for its thinness, yet it is strong and durable enough. While western paper is often made from wood pulp and ink and is said to deteriorate after 100 years, Washi is made from natural plant fibers and is said to be durable for 1,000 years. It is soft texture and the light that penetrates through the washi can also be felt with the

eyes as the warmth of the sun. Because of its high quality, it has been used for traditional objects such as folding screens and, in modern times, for lighting, accessories and wallpaper. Also, at the 2021 Tokyo Olympics, Mino washi was used for the certificates of commendation presented to athletes who achieved high results.

Profile

Daiko Studio was founded in 1961. In 2014, the company was taken over by the current president, Takanori Senda, who changed the company name to Warabi Paper Company in 2019. The company produces a wide range of products, including not only practical washi, but also art panels and wallpaper for cafés and homes. Examples of their work can be seen on the next page. If you are interested in this craft, please feel free to contact us at the following address.



1. A lot of art panels in the sitting room next to the workshop. One of the most eye-catching was an art panel nearly 2 meters long.
2. the liquid extracted by pounding the roots of the Abelmoschus Manihot and mixing it with water is vital process in the production of washi paper. One element that can make the paper strong.

Mail: contact@suigenkyo.com

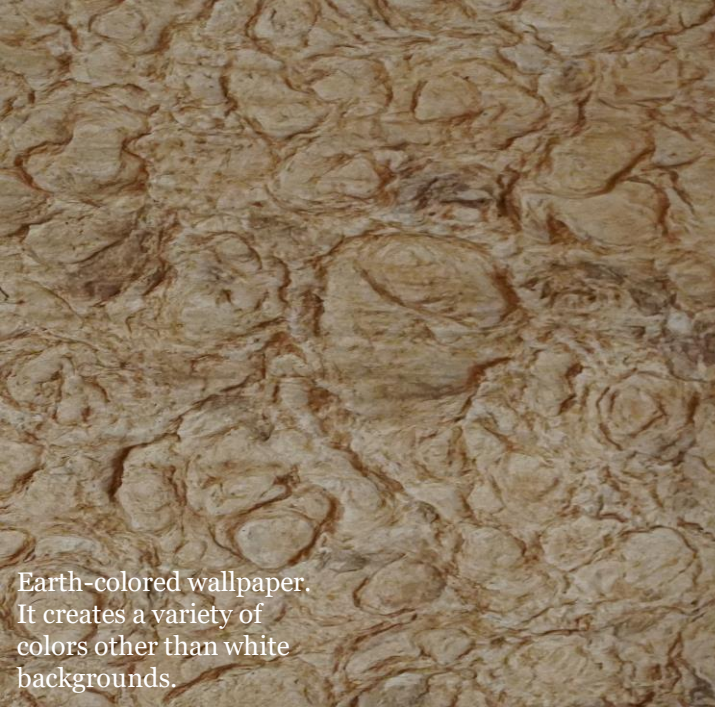
Mino-Washi
Living Life as It Comes



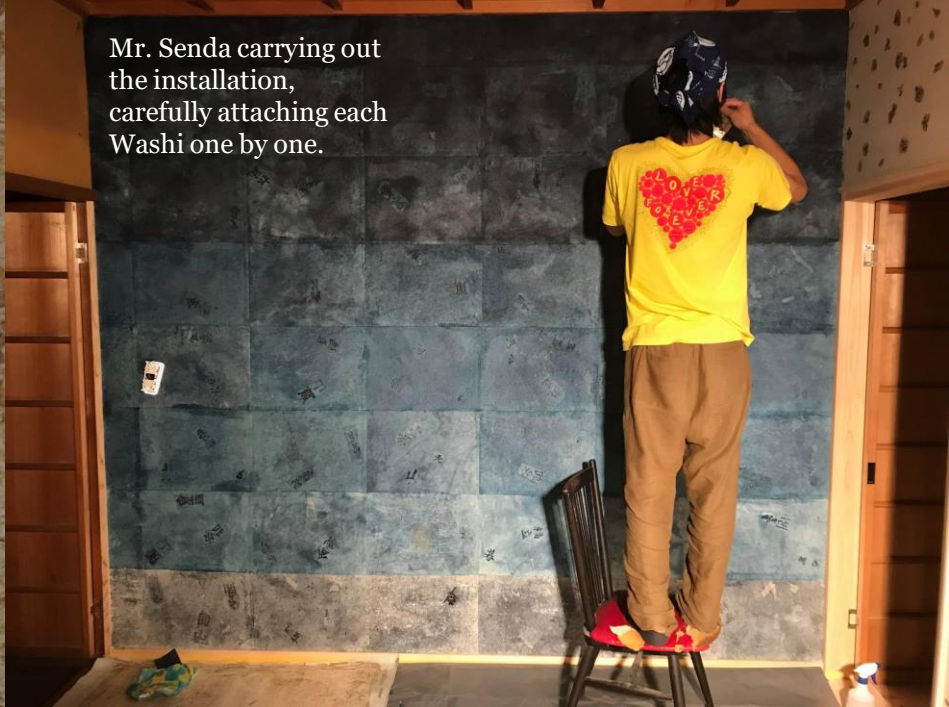
Washi is applied not only to the walls but also to the doors. The unique texture and gradation of the washi calms the eye and creates the illusion of being in nature.

Example of Construction

Washi paper-covered process with indigo dye technique. It looks like an electric current or DNA. The unique design would impress people who see this.



Earth-colored wallpaper. It creates a variety of colors other than white backgrounds.



Mr. Senda carrying out the installation, carefully attaching each Washi one by one.



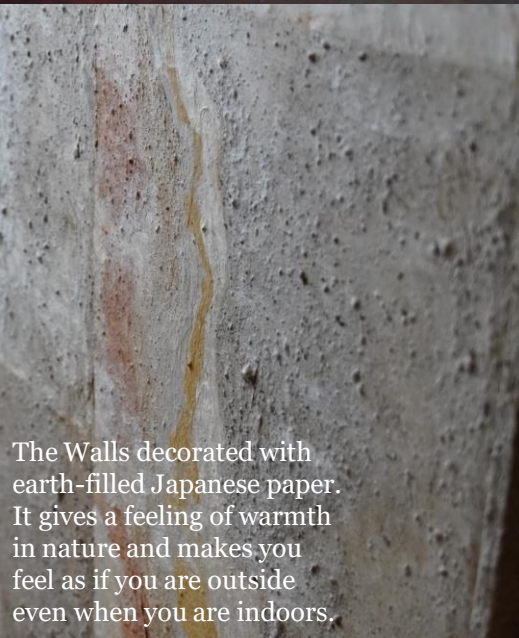
Washi can be applied to doors as well as walls.



Washi is also applied to the floor by applying lacquer to the washi.



Hemp-ink washi and bamboo charcoal washi are used for the walls, and of course the lighting in the picture is also made of washi.



The Walls decorated with earth-filled Japanese paper. It gives a feeling of warmth in nature and makes you feel as if you are outside even when you are indoors.



Red Japanese washi paper is used to create a table that cannot be bought in the market. The slight roughness makes you addict to this craft.



Edo-Kumiko FROM TOKYO TO THE WORLD



Tatematsu

【建松】

Woodwork made in Edogawa Ward, Tokyo. It originates from a combination of fine materials to keep wood aligned. By combining the pieces, the percentage of each piece becomes smaller and smaller, so the shrinkage rate of the wood is less. Kumiko is mainly used for shoji screens and also works to reduce weight by combining smaller materials.

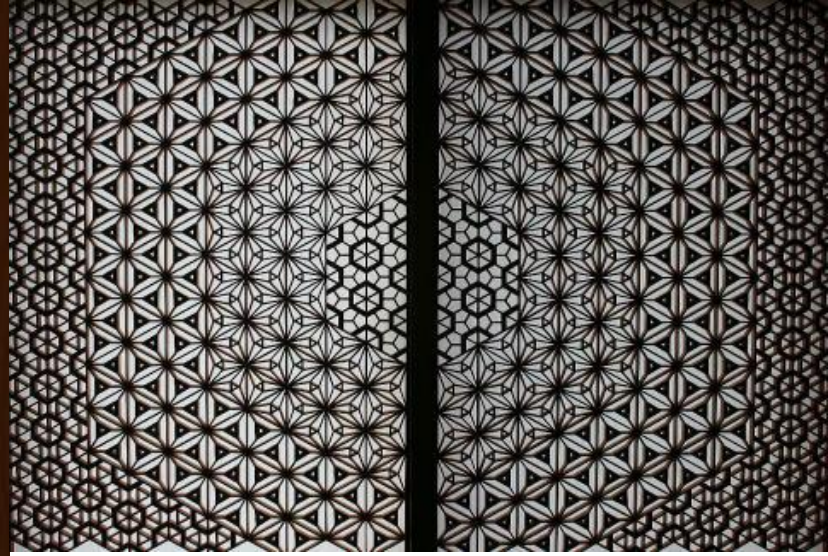
Kumiko is not a consumable item, but a craft that can be used for 100 or 200 years. In order to make them last for long time, the materials used for this craft are carefully examined. It is as precise as if it were made by a machine, but because it was made by its craftsman, you can enjoy the aging and your eyes do not get tired.

Profile

The workshop is located in Edogawa Ward, Tokyo, and the third generation, Takahiro Tanaka, who is also a qualified first-class architect, produces products that meet modern needs while making use of free ideas and traditional techniques. Manufacturer and distributor of kumiko crafts. From the selection of materials to production, each craft is made with their dedication and attention to detail by hand and their experience. We also produce custom-made folding screens and shelves. Examples of their work can be found on the next page. If you are interested in production, please feel free to contact us at the contact details below.

1. When you turn on light on it, light spills through the cracks. At night, a fantastic view opens up in the room.
2. Craftsmen use over 500 different tools to make mm-by-mm adjustments.

Mail: contact@suigenkyo.com



Shoji Schreen

Materials: Akita cedar

Size: W640 × H1250mm

Price: US\$3,000 + Tax~

Design: From Centre, Cherry Blossoms, Hemp Leaves, Bellflower, Snow - This design represents the four seasons of Japan.

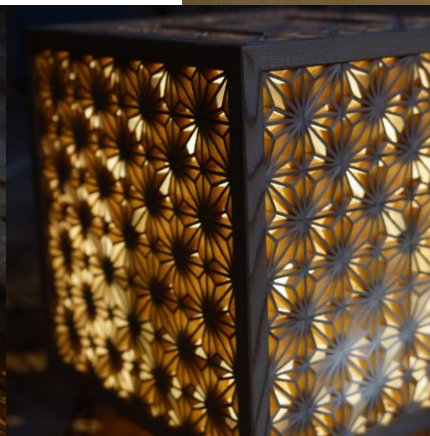


Sliding Door

Materials: Akita cedar

Size: W890 × H1760mm

Price: US\$2,100 + Tax~



Wood Lantern

Materials: Akita cedar

Size: W290 × H340

× D290mm

Price: US\$1,500 + Tax~



Example of Construction

Nagaoka-Meichiku

Bamboo fence patterns can be made based on your request. We accept orders for any location, from ordinary homes to restaurants, hotels and commercial facilities. We can turn an inorganic block wall into a calming one and cover the outdoor unit of an air-conditioner in style. If you are interested in this craft, please feel free to contact us at the contact details below.

Mail: contact@suigenkyo.com



Bamboo Bottle Stand



Product info:

This unique bottle stand stands on its own by inserting a bottle into the bamboo stand. The stand is made from traditional bamboo called 'Kyo Meichiku', which is designated as a 'Designated Craft of Kyoto' and won a prize in the Bamboo Design Competition in 2016 for its adaptation of a traditional Japanese goods to suit a variety of modern lifestyles.

Size :

30 cm (length)
8 cm (width)
4 cm (thickness)
100 g (weight)

KYO-WARE

Prod. By SHINROKUGAMA



Available in two pastel colors, white and blue. The teapot has a wide spout that prevents tea leaves from clogging up and allows for smooth pouring, and the cups can be used in conjunction with the teapot. There is also a milk jug that can be used when drinking coffee or tea. Why not make your daily life prettier?

TEA-POT
TEA-CUP
CUP
MILKJUG

W100 D180 H105
W80 D113 H70
W80 D80 H70
W50 D68 H78

Mail: contact@suigenkyo.com

KIYOMIZU WARE



Every ceramic in this page is openwork. You can enjoy variety of expressions from different angles. You can liven up your space flower or just display it as an interior design. Please visit our online site for more products.

Timeless Masterpiece



Shunzan Kiln has been producing pottery for 100 years since 1917 at the foot of Sennyu-ji Temple in Kyoto. They have been producing works that are in tune with modern life for three generations.



SHUNZAN MORI





KIYOMIZU-WARE

Prod. By ICHIRAKUGAMA



This Japanese tableware is used in high-class Japanese restaurants. All designs are painted freehand by craftsmen, and the exquisite coloring that cannot be produced by machine is a distinctive feature.

TEA-CUP

BOWLS

BOWL M

WHITE VASE

BLUE VASE

INCENSE BURNER

W85 D85 H100

W130 D130 H65

W190 D190 H95

W80 D80 H70

W140 D140 H130

W125 D125 H105

US\$130

US\$140

US\$1050

US\$610

US\$760

US\$1490

Mail: contact@suigenkyo.com

OWARI-CLOISONNE

ROUND VASE, HIWAMOE YELLOW, PLUM FILLING

This vase has an unusual coloring for Owari cloisonne. The image of the traditional "red translucent" color has been completely changed, and a bright and fresh green is used as the base color. Because of the time, patience, and high skills required, mass production is not available, and each piece takes one-two months to complete. Please visit our online site for more products.

Price: US\$2,220



Mail: contact@suigenkyo.com

EDO-KIRIKO

SAKE GLASS / SHIZUKU / GREEN AMBER

Nemoto Glass Crafts was established in 1959 by the founder, Yukio Nemoto. In his later years, he became the first person in the Edo-Kiriko industry to be awarded the Medal with Yellow Ribbon. It was presented as a gift at a summit meeting and is one of Japan's leading Edo-kiriko workshops. Currently, the second generation (Tatsuya Nemoto) and the third generation (Kosho Nemoto) are carrying on the tradition and creating works.

-Shizuku- is the representative product of the second generation of Nemoto Glass Crafts (Tatsuya Nemoto) and is a representative product of Nemoto Glass Crafts. It is a cut glass that maximizes the beauty of the curves that Nemoto Glass Crafts has woven into its glassware. This is the first model that Nemoto Glass Crafts has developed to incorporate the beauty of curves into its work. Please visit our online site for more products.



Size: W600 D600 H500
Weight: 210g
Price: US\$460

Mail: contact@suigenkyo.com



Japanese Samurai Travel Back in Time to the Present Day



The authentic armor worn by samurai in battle 500 years ago has been reproduced. These armor can not only be enjoyed as an object of appreciation. But also has an interesting history, with different shapes and names depending on the period.



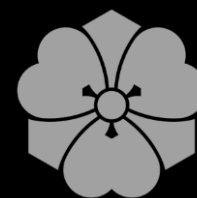
We are shipping these Samurai armors Worldwide. this is a real armor made mainly from iron. It is completely different from the imitation armor for cosplay made by amateurs from lightweight metal, resin or cardboard that has become popular in recent years.

✂It can be shipped to the most countries overseas.



Price: Available from US\$2,000~

Crafted by Armor Studio Marutake
Est. 1958



Eco-Friendly Paper Box [Omi-Ikkanbari]



Eco-Friendly Paper Box is one of the traditional crafts in Japan from ancient times. Japanese paper is used for the framework, covered with Japanese paper, and reinforced with persimmon tannin or lacquer. So basically, everything is made from PAPER!